

# **GPS Vehicle location system (GPS+GSM+GPRS)**

## **User Manual**

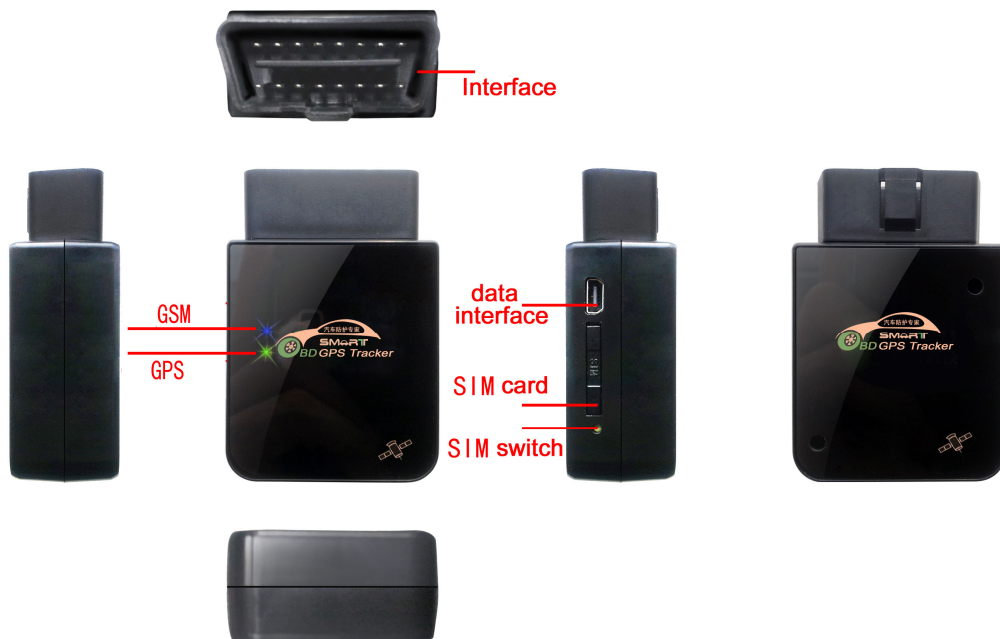


Please read the manual carefully before use the GPS Tracker so that you can install the device correctly and activate it quickly on the internet. The outlook and true color are subject to the actual product.

## 1. Technical parameter

- 1) . GSM: 850/900/1800/1900MHz
- 2) . GPRS: Class12, TCP/IP
- 3) . Working Voltage: 9–36V DC
- 4) . Working current:  $\approx 22\text{mA}$  (12vDC)
- 5) . Working current:  $\approx 12\text{mA}$  (24vDC)
- 6) . GPS locating time: Cold start  $\approx 38\text{s}$  (Open sky) Warm start  $\approx 32\text{s}$   
Hot start  $\approx 2\text{s}$  (Open sky)
- 7) . GPS Precision: 10m (2D RM)
- 8) . Working temperature:  $-20^{\circ}\text{C} \sim +70^{\circ}\text{C}$
- 9) . Working humidity: 20%~80%RH
- 10) . Measurement: 71 (L)  $\times$  49 (W)  $\times$  24 (H) mm

## 2. Out look



## 3. Device status indicators

- 3.1 The yellow-green LED behind (GPS signal state)  
GPS signal is normal, yellow-green LED light long bright. No GPS signal, the yellow-green LED flashes.
- 3.2 The blue LED in the front (GSM signal state)  
GSM signal is normal, blue LED light long bright. No GSM signal, the blue LED flashes.  
GSM no signal, flashes (0.2 sec/2 sec), Signal normal long bright;  
All LEDs will turn off after 5 minutes. When there is a new call or the power is connected, the LEDs will relight and turn off 5 minutes later.

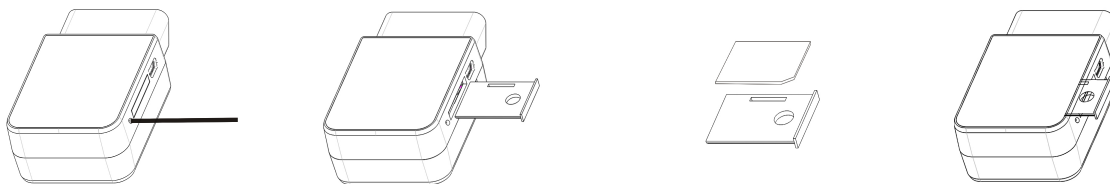
## 4. GSM card Installation

### 4.1 Preparation for the installation

4.1.1 Product Check. Open the packing box and check the device's model and accessories. If the model is wrong or the accessories not complete, please contact the dealer.

4.1.2 Choose SIM card. Please insert a SIM card to the device. Please take dealer's advice as reference.

4.1.3 GSM installation, use a toothpick or tweezers to hold the GSM slot switch (yellow button), then the GSM slot will pop up. Put the GSM card into the slot (metal side up), then replace the installed GSM slot (pictures as shown below)



4.1.4 At this point can be connected to external 9-36 v power supply

Note: don't install backwards the terminal GSM card

The GSM card must be with GSM function and enough deposit.

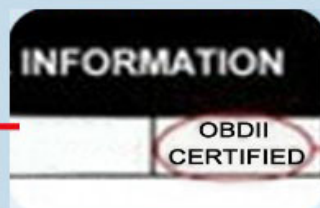
If your GSM card need input PIN when power on, please refer your phone's user manual and cancel it.

## 5. How to find the car's OBD connector locations

connect the devices to the car OBD interface, as shown below:

**Mode 1: find a sticker under the hood , find words:**

**"OBDII CERTIFIED"**



**Mode 2: OBD interface is found under the steering wheel**



## 6. The Device Working

**6.1 Power on:** the device will be power on when connecting to the current. Then the green-yellow LED indicators will light continuously. (SIM work normal) The device will upload the location data to the online platform (the default interval of uploading data is 10seconds). When the car is in static state for a long time, the device will be in energy saving mode and it will be more smart and precise.

**6.2 Power off:** Pull off the power plug then power off the device.

## 7. User Settings

1) <b>CENTER</b>		
Text command	Parameter	Sample
CENTER Add	CENTER,A,number1,number2 number3#	1)CENTER,A,13500135000,13800138000,13600136000# 2) CENTER,A,13500135000# 3) CENTER,A,,,13800138000#
CENTER Del	CENTER,D#	1) CENTER,D,1# 2) CENTER,D,1,2#
Command Description	1)Center number can control the oil and power and resume factory settings 2) Center number can receive the call and text of vibration alarm and over speeding alarm. 3) three number can be center number 4) add:sample1 add three number at the same time;sample2 add the first number ;sample3 add the third number 5) delete :sample1 delete the first center number;sample 2 delete the first and second number at the same time; 6)Add new center number by CETNER,A, and delete by CENTER,D	
Command Feedback	Successful Setting: SET CENTER TEL OK!	

2) <b>SERVER</b>		
Text command	Parameter	Sample
SERVER Parameter	SERVER,code, domain/IP,port#	SERVER,8520,m.gps001.com,8841# SERVER,8520,121.14.139.39,8080#
Command Description	This function changes the server settings, you need to modify the server IP / domain name and port. Port Range: 10 ~ 65535; wherein Password: 8520; Domain: either domain name or an IP address.	
Command Feedback	Successful Setting: SET SERVER OK!	

3) <b>APN</b>		
Text command	Parameter	Sample
APN Parameter	APN,SSID[,username, password]	1: APN,intenet,123,123# 2: APN,cmnet#
Command Description	APN differs according to the local telecom operators.Users have to confirm the APN parameter For example: APN request password, please refer to Sample1, and Sample2 for no password.	
Command Feedback	Successful Setting: SET APN OK!	

4) <b>LANG</b>		
Text command	Parameter	Sample
LANG Parameter	LANG,1# LANG,0#	1: CHINESE 0: ENGLISH
Command Description	When check the location, it will reply the Chinese location in Chinese language setting; while reply the URL link when in English language setting.	
Command Feedback	Successful Setting: SET LANG OK!	

5) <b>123</b>		
Text command	Parameter	Sample
123	123#	123#
POSITION	POSITION#	POSITION#
Command Description	Check the current location	
Command Feedback	When check the location, it will reply the Chinese location in Chinese language setting; while reply the URL link when in English language setting.	

6) <b>WHERE</b>		
Text command	Parameter	Sample
WHERE	WHERE#	WHERE#
Command Description	Check the current longitude and altitude ,time and other information of the device	
Command Feedback	Reply with current longitude and altitude, time,speed and IMEL.	

7) <b>URL</b>		
Text command	Parameter	Sample
WHERE	URL#	URL#
Command Description	Check the location link of Google map	
Command Feedback	<Datetime:12-07-05 13:21:30> <a href="http://maps.google.com/maps?q=N22.540885,E113.95265">http://maps.google.com/maps?q=N22.540885,E113.95265</a>	

8) <b>TIMER</b>		
Text command	Parameter	Sample
TIMER Parameter	TIMER,uploading interval#	TIMER,30#
Command Description	Time scope: 10~60 seconds; 10~60,means time interval; the default value is 10 seconds !	
Command Feedback	Successful Setting: SET TIMER OK !	

9) <b>VIBRATION</b>		
Text command	Parameter	Sample
VIBRATION Parameter	VIBRATION,                    alarming level[,alarming way]#	1)VIBRATION,2,3# 2)VIBRATION,2#
Command Description	Set vibration alarm    Alarm levels is from 0 to 5, the lower level the more sensitive and 0 is close. Alarming ways: 1, calling 2, texting, 3 calling and texting. Default :1.calling ;you don't have to chose the alarming way such as sample 2; Must set the center number and receiving number.	
Command Feedback	Successful reply: SET VIBRATION OK!	

10) <b>SPEEDING</b>		
Text command	Parameter	Sample
SPEEDING Parameter	SPEEDING, speed [alarming way]#	1)SPEEDING,120,3# 2)SPEEDING,120#
Command Description	The speed scope is form 60-220, if the speed is not in this scope, the alarm is off.    eg: SPEEDING,0# Alarming ways: 1, calling 2, texting, 3 calling and texting. Default :1.calling ;you don't have to chose the alarming way such as sample 2;	
Command Feedback	Successful Setting: SET SPEEDING OK!	

11) <b>PARAM</b>		
Text command	Parameter	Sample
PARAM	PARAM#	PARAM#
Command Description	The command is to check the settings and the default parameter.	
Command Feedback	IMEI:351190012535936 APN:cmnet IP:www.gps0123.com:8841 UPLOADING TIME:15S LANG:Chinese GMT: time zone (E/W8)	device IMEI operator GPRS node sever IP and port moving uploading interval language(CN/EN) time zone(E/W 0~12)

12) <b>STATUS</b>		
Text command	Parameter	Sample
STATUS	STATUS#	STATUS#
Command Description	The command is designed for checking the device's working status.	
Command Feedback	BATTERY:100% -- Battery status (SOC) GSM Signal: strength --GSM Signal strength GPS:FIXED --GPS Location condition GPS Signal: strength --GPS Signal strength Charging:connect -- power state voltage :13, 4.18 -- power and battery voltage (volts)	

13) <b>NUMBER</b>		
Text command	Text command	Text command
NUMBER	NUMBER	NUMBER
Command Description	Command Description	
Command Feedback	Command Feedback	

14) <b>RESET</b>		
Text command	Parameter	Sample
RESET	RESET#	RESET#
Command Description	Reset the device	
Command Feedback	Successful Setting: RESET OK!	

15) <b>FEE</b>		
command	Parameter	Sample
FEE Check	FEE,phone number,contents#	FEE,10010,102# (China Unicom) FEE,10086,CXYE#(China Mobile)
Command Description	The command is to check the remaining fee of the SIM card query number: SIM operator' query number Contents:Contents of the query,Such as mobile CXYE or 101 is the balance inquiry	
Command Feedback	Back to the operator's reply.	

**Note:**A comma in command must be a comma in English, can't use Chinese comma, in the middle can also use # to separate, instead of a comma



## **9. Trouble shooting**

**9.1** The device is not online or offline on the web platform

**9.1.1** First, please check the terminal indicator is normal or not, if there's no condition for observation, Please use the cell phone to call the terminal SIM card number, according to the reminding tone to determine the status of the terminal.

- If not connected, Indicating that the terminal temporarily cannot connect or the GSM signals cannot reach your location

Terminal area may not be covered by the GSM signal or weak signal in the basement and other places, please drive to the open sky.

If not connected, suggesting that the Terminal is insufficient Or has been shut down

If reminding the device SIM card is out of deposit, please make deposit by the telecom operator.

- If you can connect to the device when calling, and hear a beep. Du, du. noise

the SIM card is installed correctly and has deposited and please check with your operator for GPRS function. You also can check by searching the internet on your mobile phone. If you can not open website, the GPRS function has not open. please contact with the operator to open

- If the terminal is not connected and reminding shutdown

At this moment must recall vehicles to check the working status of the terminal, the processing steps are as follows:

a) Check whether both lights are flashing or long bright, if not bright, Check whether the interface between device and car is plugged ok.

b) If the blue GSM LED is not in constant glow, please check the installation of SIM card. If installed ok, please change another SIM card to use

**9.1.2** Please check the offline area, it's individual drops or all drops, in order to judge if the network problem of operators.

**9.2** When GPS signal receiving abnormal, please drive to a open place to locate. In general locating time need 1 to 2 minutes for the first time, If long time no locating, please check whether there is a metal barrier surrounding the installation site of the device affecting the signal.

**9.3** When GPS signal receiving abnormal, please check if the SIM card installed correctly or If the GSM signals cannot reach your location (such as the basement), please drive to the open sky.

# GPS locating terminal warranty card

## special announcement:

- 1.If products has technical changes ,we've no prior notice.
- 2.The shape and color, please in kind prevail
- 3.Warranty card applies to the specified IMEI number in the following table
- 4.Please properly keep this card and receipt in case of after-sales service
- 5.The following is for the warranty reference

This form is the basic of the warranty certificate information, please fill out the form carefully

<b>Name</b>		<b>Telephone</b>	
<b>Address</b>			
<b>Type</b>		<b>IMEI</b>	
<b>Date</b>			
<b>Purchase name</b>			
<b>Agency address</b>			
<b>Agency Phone</b>			
<p>1. Hosts are guaranteed for 12 months, from date of purchase which products are not being damaged by any man-made factors</p> <p>2. Listed below are the situation which is not covered under the warranty, users need to pay maintenance fees</p> <ul style="list-style-type: none"><li>(1) Beyond the warranty period</li><li>(2) maintenance and repair by disassembling the machine without authorization</li><li>(3) Soak, damage or burn circuit board</li><li>(4) Installation, use, maintenance or improper storage</li><li>(5) Housings, lenses or internal damage to the antenna</li><li>(6) IMEI number tearing or blurred</li><li>(7) Warranty certificate inconsistent with the product model or has been modified</li><li>(8) Damage caused by irresistible force</li></ul>			

# Maintenance Record

The first time			
Maintenance company		Date	
Fault statement			
Maintenance condition			
IMEI		serviceman	

The second time			
Maintenance company		Date	
Fault statement			
Maintenance condition			
IMEI		serviceman	